

Human Dihydrolipoamide Dehydrogenase/DLD protein (Recombinant) (His-Tag) (STJP016646)

GENERAL INFORMATION

Product Type	Proteins
Applications	SDS-PAGE/Enzyme Activity
Host / Source	E.coli

PRODUCT PROPERTIES

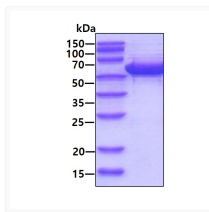
Concentration	1 mg/mL
Formulation	Liquid in 20mM Tris-HCl buffer (pH 8.0) containing 1mM DTT, 0.1M NaCl, 10% Glycerol
Molecular Weight	54.4 kDa
Storage Instruction	For short term storage, keep at +2C to +8C for up to 1 week. For long term storage, aliquot and store at -20C, and avoid repeat freeze-thaw cycles.

TARGET INFORMATION

Gene ID	1738
Gene Symbol	DLD
UniProt ID	DLDH_HUMAN
Immunogen Region	36-509aa
Immunogen Sequence	MADQ PIDADVTVIG SGPGGYVAAI KAAQLGFKTV CIEKNETLGG TCLNVGCIPS KALLNNSHYH HMAHGKDFAS RGIEMSEVRL NLDKMMEQKS TAVKALTGGI AHLFKQNKVV HVNGYGKITG KNQVTATKAD GGTQVIDTKN ILIATGSEVT PFPGITIDED TIVSSTGALS LKKVPEKMVV IGAGVI

ADDITIONAL INFORMATION

Note STRICTLY FOR FURTHER SCIENTIFIC RESEARCH USE ONLY (RUO). MUST NOT TO BE USED IN DIAGNOSTIC OR THERAPEUTIC APPLICATIONS.



SDS-PAGE gel showing recombinant human DLD protein 3µg under reducing conditions Coomassie blue stain