

## Human Cyclophilin-like 2/PPIL2 protein (Recombinant) (His-Tag) (STJP016639)

### GENERAL INFORMATION

Product Type	Proteins
Applications	SDS-PAGE/Enzyme Activity
Host / Source	E.coli

### PRODUCT PROPERTIES

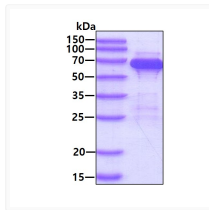
Concentration	0.5 mg/mL
Formulation	Liquid in 20mM Tris-HCl buffer (pH 8.0) containing 20% Glycerol, 0.1M NaCl
Molecular Weight	61.6 kDa
Storage Instruction	For short term storage, keep at +2C to +8C for up to 1 week. For long term storage, aliquot and store at-20C, and avoid repeat freeze-thaw cycles.

### TARGET INFORMATION

Gene ID	<a href="#">23759</a>
Gene Symbol	<a href="#">PPIL2</a>
UniProt ID	<a href="#">PPIL2_HUMAN</a>
Immunogen Region	1-527aa
Immunogen Sequence	MGKRQHQQDK MYITCAEYTH FYGGKKPDLP QTNFRRLPFD HCSSLQPFV YPVCTPDGIV FDLLNIVPWL KKYGTNPSNG EKLDGRSLIK LNFSKNSEGG YHCPVLFTVF TNNTHIVAVR TTGNVYAYEA VEQLNIKAKN FRDLLTDEPF SRQDIITLQD PTNLDFNVS NFYHVKNMNMK IIDPDEEKAK QDPSYYLKNT NAETRE

### ADDITIONAL INFORMATION

Note STRICTLY FOR FURTHER SCIENTIFIC RESEARCH USE ONLY (RUO). MUST NOT TO BE USED IN DIAGNOSTIC OR THERAPEUTIC APPLICATIONS.



SDS-PAGE of recombinant human Cyclophilin-like 2 PPIL2 protein under reducing conditions