

## Human Aprataxin/APTX protein (Recombinant) (His-Tag) (STJP016620)

### GENERAL INFORMATION

Product Type	Proteins
Applications	SDS-PAGE
Host / Source	E.coli

### PRODUCT PROPERTIES

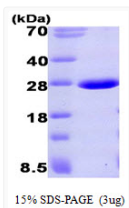
Concentration	0.25 mg/mL
Formulation	Liquid in 20mM Tris-HCl buffer (pH 7.5) containing 20% Glycerol, 100mM NaCl, 0.1mM PMSF
Molecular Weight	23.9 kDa
Storage Instruction	For short term storage, keep at +2C to +8C for up to 1 week. For long term storage, aliquot and store at -20C, and avoid repeat freeze-thaw cycles.

### TARGET INFORMATION

Gene ID	<a href="#">54840</a>
Gene Symbol	<a href="#">APTX</a>
UniProt ID	<a href="#">APTX_HUMAN</a>
Immunogen Region	1-168aa
Immunogen Sequence	MRGSHHHHHH GMASMTGGQQ MGRDLYDDDD KDRWAGSMQD PKMQVYKDEQ VVVIKDKYPK ARYHWLVLPW TSISLKA VA REHLELLKHM HTVGEKVIVD FAGSSKLRFR LGYHAIPSMS HVHLHVISQD FDSPCLKNKK HWNSFNTEYF LESQAVIEMV QEAGRVTVRD GPELLKLPL RCHECQQLLP SIPQLKEHLR KHWTDQ

### ADDITIONAL INFORMATION

Note STRICTLY FOR FURTHER SCIENTIFIC RESEARCH USE ONLY (RUO). MUST NOT TO BE USED IN DIAGNOSTIC OR THERAPEUTIC APPLICATIONS.



SDS-PAGE gel of recombinant human Aprataxin APTX protein 3 $\mu$ g under reducing conditions  
 Coomassie blue stain