

## Human GTF2B protein (Recombinant) (His-Tag) (STJP016591)

### GENERAL INFORMATION

Product Type	Proteins
Applications	SDS-PAGE
Host / Source	E.coli

### PRODUCT PROPERTIES

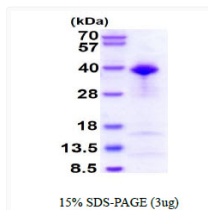
Concentration	0.25 mg/mL
Formulation	Liquid in 20mM MES buffer (pH 6.0) containing 30% Glycerol, 0.1M NaCl, 1mM DTT
Molecular Weight	36.9 kDa
Storage Instruction	For short term storage, keep at +2C to +8C for up to 1 week. For long term storage, aliquot and store at -20C, and avoid repeat freeze-thaw cycles.

### TARGET INFORMATION

Gene ID	<a href="#">2959</a>
Gene Symbol	<a href="#">GTF2B</a>
UniProt ID	<a href="#">TF2B_HUMAN</a>
Immunogen Region	1-316aa
Immunogen Sequence	MGSSHHHHH SSGLVPRGSH MASTSRLDAL PRVTCPNHPD AILVEDYRAG DMICPECGLV VGDRVIDVGS EWRTFSENDKA TKDPSRVGDS QNPLSDGDL STMIGKGTGA ASFDEFNGSK YQNRRTMSSS DRAMMNAFKE ITTMADRINL PRNIVDRNTNN LFKQVYEQKS LKGRANDAIA SACLYIACRQ EGVPRTFKEI CAVSRISKKE IGRCFKLK ALETVDL

### ADDITIONAL INFORMATION

Note STRICTLY FOR FURTHER SCIENTIFIC RESEARCH USE ONLY (RUO). MUST NOT TO BE USED IN DIAGNOSTIC OR THERAPEUTIC APPLICATIONS.



SDS-PAGE gel of recombinant human GTF2B protein under reducing conditions