

Human MAT2B protein (Recombinant) (No-Tag) (STJP016567)

GENERAL INFORMATION

Product Type	Proteins
Applications	SDS-PAGE
Host / Source	E.coli

PRODUCT PROPERTIES

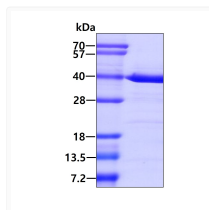
Concentration	1 mg/mL
Formulation	Liquid in 20mM Tris-HCl buffer (pH 8.0) containing 1mM DTT, 10% Glycerol
Molecular Weight	36.4 kDa
Storage Instruction	For short term storage, keep at +2C to +8C for up to 1 week. For long term storage, aliquot and store at -20C, and avoid repeat freeze-thaw cycles.

TARGET INFORMATION

Gene ID	27430
Gene Symbol	MAT2B
UniProt ID	MAT2B_HUMAN
Immunogen Region	1-323aa
Immunogen Sequence	MPEMPEDMEQ EEVNIPNRRV LVTGATGLLG RAVHKEFQQN NWHAVGCGFR RARPKFEQVN LLDSNAVHHI IHDFQPHVIV HCAAERRPDV VENQPDAAASQ LNVDAAGNLA KEAAAVGAFI IYISSDYVFD GTNPPYREED IPAPLNLYGK TKLDGEKAVL ENNLGAAVLR IPILYGEVEK LEESAVTVMF DKVQFSNKSA NMDHWQQRFP THVKDVATVC RQLAEKRM

ADDITIONAL INFORMATION

Note STRICTLY FOR FURTHER SCIENTIFIC RESEARCH USE ONLY (RUO). MUST NOT TO BE USED IN DIAGNOSTIC OR THERAPEUTIC APPLICATIONS.



SDS-PAGE of recombinant human MAT2B protein 3µg under reducing conditions with Coomassie blue stain