

## Human CCL28/MEC protein (Recombinant) (His-Tag) (STJP016529)

### GENERAL INFORMATION

Product Type	Proteins
Applications	SDS-PAGE
Host / Source	E.coli

### PRODUCT PROPERTIES

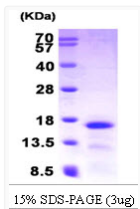
Concentration	1 mg/mL
Formulation	Liquid in 10mM Sodium Citrate buffer (pH 3.5) containing 10% Glycerol
Molecular Weight	14.3 kDa
Storage Instruction	For short term storage, keep at +2C to +8C for up to 1 week. For long term storage, aliquot and store at -20C, and avoid repeat freeze-thaw cycles.

### TARGET INFORMATION

Gene ID	<a href="#">56477</a>
Gene Symbol	<a href="#">CCL28</a>
UniProt ID	<a href="#">CCL28_HUMAN</a>
Immunogen Region	23-127aa
Immunogen Sequence	MGSSHHHHHH SGLVPRGSH MILPIASSCC TEVSHHISRR LLERVNMCRI QRADGDCDLA AVILHVKRRR ICVSPHNHTV KQWMKVQAAK KNGKGNVCHR KKHGKRNNSN RAHQGKHETY GHKTPY

### ADDITIONAL INFORMATION

Note STRICTLY FOR FURTHER SCIENTIFIC RESEARCH USE ONLY (RUO). MUST NOT TO BE USED IN DIAGNOSTIC OR THERAPEUTIC APPLICATIONS.



SDS-PAGE of recombinant human CCL28 MEC protein under reducing conditions