

## Human CCL26/Eotaxin-3 protein (Recombinant) (No-Tag) (STJP016520)

### GENERAL INFORMATION

Product Type	Proteins
Applications	SDS-PAGE
Host / Source	E.coli

### PRODUCT PROPERTIES

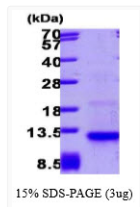
Concentration	0.25 mg/mL
Formulation	Liquid in phosphate-Buffered Saline (pH 7.4) containing 10% Glycerol
Molecular Weight	8.5 kDa
Storage Instruction	For short term storage, keep at +2C to +8C for up to 1 week. For long term storage, aliquot and store at -20C, and avoid repeat freeze-thaw cycles.

### TARGET INFORMATION

Gene ID	<a href="#">10344</a>
Gene Symbol	<a href="#">CCL26</a>
UniProt ID	<a href="#">CCL26_HUMAN</a>
Immunogen Region	24-94aa
Immunogen Sequence	MTRGSDISKT CCFQYSHKPL PWTWVRSYEF TSNSCSQRAV IFTTKRGKKV CTHPRKKWVQ KYISLLKTPK QL

### ADDITIONAL INFORMATION

Note STRICTLY FOR FURTHER SCIENTIFIC RESEARCH USE ONLY (RUO). MUST NOT TO BE USED IN DIAGNOSTIC OR THERAPEUTIC APPLICATIONS.



SDS-PAGE gel of recombinant human CCL26 Eotaxin-3 protein under reducing conditions