

Human Carbonic Anhydrase 2/CA2 protein (Recombinant) (No-Tag) (STJP016471)

GENERAL INFORMATION

Product Type	Proteins
Applications	SDS-PAGE/Enzyme Activity
Host / Source	E.coli

PRODUCT PROPERTIES

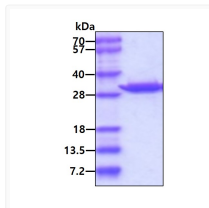
Concentration	1 mg/mL
Formulation	Liquid in phosphate-Buffered Saline (pH 7.4) containing 10% Glycerol
Molecular Weight	29.2 kDa
Storage Instruction	For short term storage, keep at +2C to +8C for up to 1 week. For long term storage, aliquot and store at -20C, and avoid repeat freeze-thaw cycles.

TARGET INFORMATION

Gene ID	760
Gene Symbol	CA2
UniProt ID	CAH2_HUMAN
Immunogen Region	1-260aa
Immunogen Sequence	MSHHWGYGKH NGPEHWHKDF PIAKGERQSP VDIDTHTAKY DPSLKPLSVS YDQATSLRIL NNGHAFNVEF DDSQDKAVLK GGPLDGTYRL IQHFHFWGSL DGGQSEHTVD KKKYAAELHL VHWNTKYGDF GKAVQQPDGL AVLGIFLKV GSAKPG LQKVV DVLDSIKTKG KSADFTNFDP RGLLPESLDY WTYPGSLTTP PLLECVTWIV LKEPISVSSE QVLKFRKL

ADDITIONAL INFORMATION

Note STRICTLY FOR FURTHER SCIENTIFIC RESEARCH USE ONLY (RUO). MUST NOT TO BE USED IN DIAGNOSTIC OR THERAPEUTIC APPLICATIONS.



SDS-PAGE gel showing recombinant human Carbonic Anhydrase 2 CA2 protein 3µg under reducing conditions Coomassie blue stain