

Human ASF1A protein (Recombinant) (His-Tag) (STJP016443)

GENERAL INFORMATION

Product Type	Proteins
Applications	SDS-PAGE
Host / Source	E.coli

PRODUCT PROPERTIES

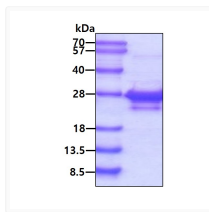
Concentration	1 mg/mL
Formulation	Liquid in 20mM Tris-HCl buffer (pH 8.0) containing 1mM DTT, 10% Glycerol
Molecular Weight	27 kDa
Storage Instruction	For short term storage, keep at +2C to +8C for up to 1 week. For long term storage, aliquot and store at -20C, and avoid repeat freeze-thaw cycles.

TARGET INFORMATION

Gene ID	25842
Gene Symbol	ASF1A
UniProt ID	ASF1A_HUMAN
Immunogen Region	1-204aa
Immunogen Sequence	MAKV QVNNVVLDN PSPFYNPFQF EITFECIEDL SEDLEWKIY VGSASEEYD QVLDSVLVGP VPAGRHMVFV QADAPNPGLI PDADAVGVTV VLITCTYRGQ EFIRVGYVYN NEYTETELRE NPPVKPDFSK LQRNILASNP RVTRFHINWE DNTEKLEDAE SSNPNLQSLD STDALPSASK GWSTSE

ADDITIONAL INFORMATION

Note STRICTLY FOR FURTHER SCIENTIFIC RESEARCH USE ONLY (RUO). MUST NOT TO BE USED IN DIAGNOSTIC OR THERAPEUTIC APPLICATIONS.



SDS-PAGE gel of recombinant human ASF1A protein under reducing conditions Coomassie blue stain