

Human Sulfotransferase 1E1/SULT1E1 protein (Recombinant) (His-Tag) (STJP016433)

GENERAL INFORMATION

Product Type	Proteins
Applications	SDS-PAGE
Host / Source	E.coli

PRODUCT PROPERTIES

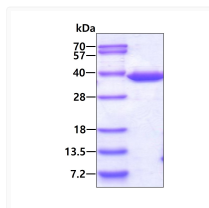
Concentration	1 mg/mL
Formulation	Liquid in 20mM Tris-HCl buffer (pH 8.0) containing 20% Glycerol
Molecular Weight	36.1 kDa
Storage Instruction	For short term storage, keep at +2C to +8C for up to 1 week. For long term storage, aliquot and store at -20C, and avoid repeat freeze-thaw cycles.

TARGET INFORMATION

Gene ID	6783
Gene Symbol	SULT1E1
UniProt ID	ST1E1_HUMAN
Immunogen Region	1-294aa
Immunogen Sequence	MNSELDYYEK FEEVHGILMY KDFVKYWDNV EAFQARPDDL VIATYPKSGT TWVSEIVYMI YKEGDVEKCK EDVIFNRIPF LECRKENLMN GVKQLDEMNS PRIVKTHLPP ELLPASFWEK DCKIYLORN AKDVAVSFY FFLMVAGHPN PGS LPEFVEK FMQGGVQPYGS WYKHVKS WWE K GKS PRVLFL FYEDLKEDIR KEVIKLIHFL ERKPSEELVD RIIHHTSF

ADDITIONAL INFORMATION

Note STRICTLY FOR FURTHER SCIENTIFIC RESEARCH USE ONLY (RUO). MUST NOT TO BE USED IN DIAGNOSTIC OR THERAPEUTIC APPLICATIONS.



Recombinant human SULT1E1 protein SDS-PAGE gel showing 3µg under reducing conditions Coomassie blue stain