

Human LMW-PTP/ACP1 protein (Recombinant) (His-Tag) (STJP016429)

GENERAL INFORMATION

| | |
|---------------|--------------------------|
| Product Type | Proteins |
| Applications | SDS-PAGE/Enzyme Activity |
| Host / Source | E.coli |

PRODUCT PROPERTIES

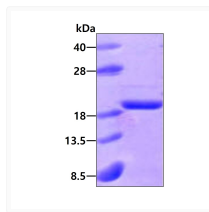
| | |
|---------------------|---|
| Concentration | 1 mg/mL |
| Formulation | Liquid in 20mM MES buffer (pH 6.0) containing 0.1mM PMSF, 2mM EDTA, 10% Glycerol |
| Molecular Weight | 20.1 kDa |
| Storage Instruction | For short term storage, keep at +2C to +8C for up to 1 week. For long term storage, aliquot and store at -20C, and avoid repeat freeze-thaw cycles. |

TARGET INFORMATION

| | |
|--------------------|---|
| Gene ID | 52 |
| Gene Symbol | ACP1 |
| UniProt ID | PPAC_HUMAN |
| Immunogen Region | 1-158aa |
| Immunogen Sequence | MAEQATKSVL FVCLGNICRS PIAEAVFRKL VTDQNIENW VIDSGAVSDW NVGRSPDPRA VSCLRNHGIIH TAHKARQITK EDFATEDYIL CMDESNLRLD NRKSNQVKTC KAKIELLGSY DPQKQLIIED PYYGNDSDFE TVYQQCVRCC RAFLEKAH |

ADDITIONAL INFORMATION

Note STRICTLY FOR FURTHER SCIENTIFIC RESEARCH USE ONLY (RUO). MUST NOT TO BE USED IN DIAGNOSTIC OR THERAPEUTIC APPLICATIONS.



SDS-PAGE gel of recombinant human LMW-PTP ACP1 protein stained with Coomassie blue