

Human CCL5/RANTES protein (Recombinant) (C-hFC) (STJP003014)

GENERAL INFORMATION

Product Type	Proteins
Host / Source	HEK293 cells

PRODUCT PROPERTIES

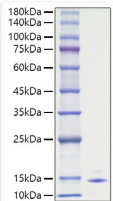
Formulation	Supplied as a 0.22 µg/ml filtered solution in PBS, pH 7.4.
Storage Instruction	Store at -20°C for up to 1 year from the date of receipt, and avoid repeat freeze-thaw cycles.

TARGET INFORMATION

Gene ID	6352
Gene Symbol	CCL5
UniProt ID	CCL5_HUMAN
Immunogen Region	Ser24-Ser91
Immunogen Sequence	SLEPVYWNSANKRFQAEAGGY VLYPQIGDRLDLLCPRARPP GPHSSPSYEFYKLYLVEGAQ GRRCEAPPAPNLLLTCDRPD LDLRFTIKFQEYSPNLWGHE FRSHHDYIIATSDGTREGL ESLQGGVCLTRGMKVLVRVQ QSPRGGAVPRKPVSEMPMER DRGAAHSAEPGRDTPGDPS SNATSRGAEGPLPPSPMPA

ADDITIONAL INFORMATION

Note	STRICTLY FOR FURTHER SCIENTIFIC RESEARCH USE ONLY (RUO). MUST NOT TO BE USED IN DIAGNOSTIC OR THERAPEUTIC APPLICATIONS.
------	---



Recombinant Human CCL5/RANTES Protein was determined by SDS-PAGE with Coomassie Blue, showing a band at 10-15 kDa.