

Human CCL3/MIP-1 alpha protein (Recombinant) (N-hFc) (STJP003010)

GENERAL INFORMATION

Product Type	Proteins
Host / Source	HEK293 cells

PRODUCT PROPERTIES

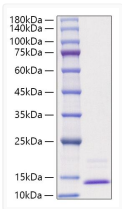
Formulation	Lyophilised from a 0.22 Mu m filtered solution of PBS, pH 7.4.
Storage Instruction	Store at -20°C for up to 1 year from the date of receipt, and avoid repeat freeze-thaw cycles.

TARGET INFORMATION

Gene ID	6348
Gene Symbol	CCL3
UniProt ID	CCL3_HUMAN
Immunogen Region	Ala23-Ala92
Immunogen Sequence	GPETLCGAEALVDALQFVCGP RGFYFNKPTGYGSSIRRAPQ TGIIVDECCFRSCDLRRLEMY CAPLKPTKAA

ADDITIONAL INFORMATION

Note	STRICTLY FOR FURTHER SCIENTIFIC RESEARCH USE ONLY (RUO). MUST NOT TO BE USED IN DIAGNOSTIC OR THERAPEUTIC APPLICATIONS.
------	---



Recombinant Human CCL3/MIP-1 alpha Protein was determined by SDS-PAGE with Coomassie Blue, showing a band at 10-15 kDa.