

## Human Lutropin beta chain/LHB protein (Recombinant) (C-His) (STJP003001)

### GENERAL INFORMATION

Product Type	Proteins
Host / Source	HEK293 cells

### PRODUCT PROPERTIES

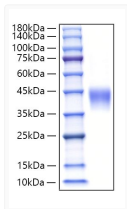
Formulation	Lyophilised from 0.22 Mu m filtered solution in PBS (pH 7.4). Normally 8% Trehalose is added as protectant before lyophilisation.
Storage Instruction	Store at -20°C for up to 1 year from the date of receipt, and avoid repeat freeze-thaw cycles.

### TARGET INFORMATION

Gene ID	<a href="#">3972</a>
Gene Symbol	<a href="#">LHB</a>
UniProt ID	<a href="#">LSHB_HUMAN</a>
Immunogen Region	Ser21-Leu141
Immunogen Sequence	HPLMVSDRMDLDTLARSRL EKRMSEEMRLLMEFEERKR AAEQRQKAENFWTGDTSDDQ LVLGKKDMGWPFQADGQEG

### ADDITIONAL INFORMATION

Note	STRICTLY FOR FURTHER SCIENTIFIC RESEARCH USE ONLY (RUO). MUST NOT TO BE USED IN DIAGNOSTIC OR THERAPEUTIC APPLICATIONS.
------	---



Recombinant Human LHB Protein was determined by SDS-PAGE with Coomassie Blue, showing a band at 35-45 kDa.