

## Human CCL14/HCC-1/HCC-3 protein (Recombinant) (No-Tag) (STJP002965)

### GENERAL INFORMATION

Product Type	Proteins
Host / Source	E.coli

### PRODUCT PROPERTIES

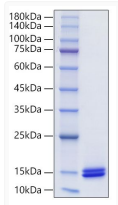
Formulation	Lyophilised from 0.22 Mu m filtered solution in PBS (pH 7.4). Normally 8% Trehalose is added as protectant before lyophilisation.
Storage Instruction	Store at -20°C for up to 1 year from the date of receipt, and avoid repeat freeze-thaw cycles.

### TARGET INFORMATION

Gene ID	<a href="#">6358</a>
Gene Symbol	<a href="#">CCL14</a>
UniProt ID	<a href="#">CCL14_HUMAN</a>
Immunogen Region	Thr20-Asn93
Immunogen Sequence	APLGEVGN YFGVQDAVPFGN VPVLPVDS PVLSDHLGQSE AGGLPRGPAVTDLDHLKGIL RRRQLYCRTGFHLEIFPNGT IQGTRKDHSRFGILEFISIA VGLVSIRGVDSGLYLGMNEK GELYGSEKLTQECVFREQFE ENWYNTYSSNLYKHVDTGRR YYVALNKDGTREGTRTKRH QKFTHFLPRPDPDKVPELY KDILSQS

### ADDITIONAL INFORMATION

Note	STRICTLY FOR FURTHER SCIENTIFIC RESEARCH USE ONLY (RUO). MUST NOT TO BE USED IN DIAGNOSTIC OR THERAPEUTIC APPLICATIONS.
------	---



Recombinant Human CCL14/HCC-1/HCC-3 Protein was determined by SDS-PAGE with Coomassie Blue, showing a band at 12-20 kDa.