

Human FGF-1/aFGF protein (Recombinant) (C-His) (STJP002961)

GENERAL INFORMATION

Product Type	Proteins
Host / Source	HEK293 cells

PRODUCT PROPERTIES

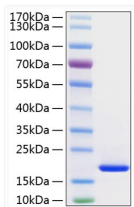
Formulation	Lyophilised from a 0.22 Mu m filtered solution of 50mM MOPS, 100mM Na2SO4, 10mM EDTA, pH 7.9
Storage Instruction	Store at -20°C for up to 1 year from the date of receipt, and avoid repeat freeze-thaw cycles.

TARGET INFORMATION

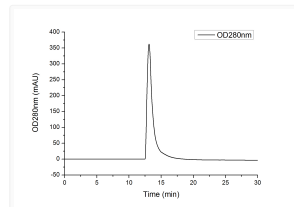
Gene ID	2246
Gene Symbol	FGF1
UniProt ID	FGF1_HUMAN
Immunogen Region	Phe16-Asp155
Immunogen Sequence	QKKRRLTLHEFKSAKTLT KEDPLVKIKTKKVNSADECA NRCIRNKGFPFTCKAFVFDK SRKRCYWYPFNSMSSGVKKG FGHEFDLYENKDYIRNCIIG KGGSYKGTVSITKSGIKCQP WNSMIPHEHSFLPSSYRGKD LQENYCRNPRGEEGWPWCFT SNPEVRYEVDIPQCSEVEC MTCNGESYRGPMDHTESGKT CQRWDQQTTPHRHKFLPERYP DKGFDDNYCRNPDGKPRPW

ADDITIONAL INFORMATION

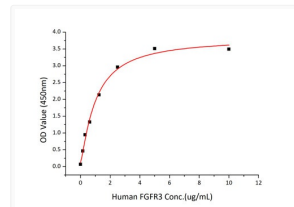
Note STRICTLY FOR FURTHER SCIENTIFIC RESEARCH USE ONLY (RUO). MUST NOT TO BE USED IN DIAGNOSTIC OR THERAPEUTIC APPLICATIONS.



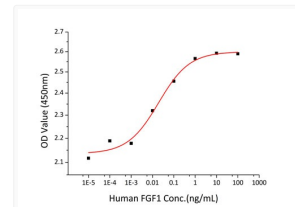
Recombinant Human FGF-1/aFGF Protein was determined by SDS-PAGE with Coomassie Blue, showing a band at 20 kDa.



The purity of human FGF acidic/FGF1 Protein (Cat. STJP002961) was greater than 95% as determined by SEC-HPLC.



Immobilized Recombinant Human FGF1 at 5 Mu g/mL (100 Mu L/well) can bind Recombinant Human FGFR3 with a linear range of 0. 5-1. 5 Mu g/mL.



Recombinant Human FGF1 promotes the proliferation of BALB/c 3T3 mouse embryonic fibroblasts cells. The ED₅₀ for this effect is typically 22-140 pg/mL.