

Human CXCL5/ENA-70 protein (Recombinant) (N-hFc&Avi) (STJP002908)

GENERAL INFORMATION

Product Type	Proteins
Host / Source	HEK293 cells

PRODUCT PROPERTIES

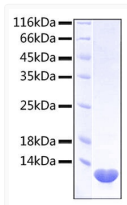
Formulation	Lyophilised from a 0.2 Mu m filtered solution of 20 mM Sodium Citrate, 150 mM NaCl, pH 5.0.
Storage Instruction	Store at -20°C for up to 1 year from the date of receipt, and avoid repeat freeze-thaw cycles.

TARGET INFORMATION

Gene ID	6374
Gene Symbol	CXCL5
UniProt ID	CXCL5_HUMAN
Immunogen Region	Ala37-Asn114
Immunogen Sequence	SELEKAMVALIDVFHQYSGR EGDKHKLKKSELKELINNEL SHFLEEIKEQEVVDKVMETL DNDGDGECDFQEFMAFVAMV TTACHEFFEHE

ADDITIONAL INFORMATION

Note	STRICTLY FOR FURTHER SCIENTIFIC RESEARCH USE ONLY (RUO). MUST NOT TO BE USED IN DIAGNOSTIC OR THERAPEUTIC APPLICATIONS.
------	---



Recombinant protein Human CXCL5/ENA-70 was determined by SDS-PAGE under reducing conditions with Coomassie Blue, showing a band at 15-25 kDa.