

## Human APP protein (Recombinant) (C-6His) (STJP002896)

### GENERAL INFORMATION

Product Type	Proteins
Host / Source	HEK293 cells

### PRODUCT PROPERTIES

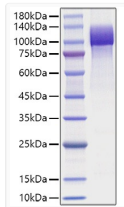
Formulation	Lyophilised from a 0.22 Mu m filtered solution of PBS, pH 7.4.
Storage Instruction	Store at -20°C for up to 1 year from the date of receipt, and avoid repeat freeze-thaw cycles.

### TARGET INFORMATION

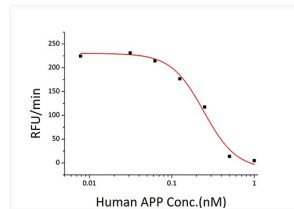
Gene ID	<a href="#">351</a>
Gene Symbol	<a href="#">APP</a>
UniProt ID	<a href="#">A4_HUMAN</a>
Immunogen Region	Met1-Lys687
Immunogen Sequence	MLPGLALLLLAAWTARALEV PTDGNAGLLAEPQIAMFCGR LNMHMNVQNGKWDSDPSGK TCIDTKEGILQYCQEVYPEL QITNVVEANQPVTIQNWCKR GRKQCKTHPHFVIPYRCLVG EFVSDALLVPDKCKFLHQR MDVCETHLHWHTVAKETCSE KSTNLHDYGMLLPCGIDKFR GVEFVCCPLAEESDNVDSAD AEEDSDVWVGADTDYADG SEDKVVEVAEEEEVAEVEE

### ADDITIONAL INFORMATION

Note **STRICTLY FOR FURTHER SCIENTIFIC RESEARCH USE ONLY (RUO). MUST NOT TO BE USED IN DIAGNOSTIC OR THERAPEUTIC APPLICATIONS.**



Recombinant Human APP Protein was determined by SDS-PAGE with Coomassie Blue, showing a band at 100-120 kDa.



Recombinant Human APP inhibit trypsin cleavage of a fluorogenic peptide substrate, Mca-RPKPVE-Nval-WRK (Dnp) -NH2 (Catalog # ES002). The IC50 value is < 0.24 nM, as measured with under the described conditions.