

Human Ephrin-A1/EFNA1 protein (Recombinant) (C-hFc) (STJP002760)

GENERAL INFORMATION

Product Type	Proteins
Host / Source	HEK293 cells

PRODUCT PROPERTIES

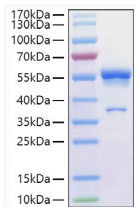
Formulation	Lyophilised from a 0.22 Mu m filtered solution of PBS, pH 7.4.
Storage Instruction	Store at -20°C for up to 1 year from the date of receipt, and avoid repeat freeze-thaw cycles.

TARGET INFORMATION

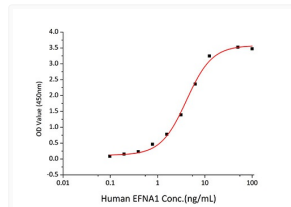
Gene ID	1942
Gene Symbol	EFNA1
UniProt ID	EFNA1_HUMAN
Immunogen Region	Asp19-Ser182
Immunogen Sequence	DRHTVFWNSSNPKFRNEDYT IHVQLNDYVDIICPHYEDHS VADAAMEQYILYLVEHEEYQ LCQPQSKDQVRWQCNRPSAK HGPEKLSEKQRFPTLTK EFKEGHSYYYISKPIHQHED RCLRLKVTVSGKITHSPQAH DNPQEKRLAADDPEVRLVLS IGHS

ADDITIONAL INFORMATION

Note STRICTLY FOR FURTHER SCIENTIFIC RESEARCH USE ONLY (RUO). MUST NOT TO BE USED IN DIAGNOSTIC OR THERAPEUTIC APPLICATIONS.



Active Recombinant Human Ephrin-A1/EFNA1 Protein was determined by SDS-PAGE with Coomassie Blue, showing a band at 55-60kDa.



Immobilized Human EphA2 at 1 Mu g/mL (100 Mu L/well) can bind Human EFNA1 with a linear range of 0. 098-4. 084 ng/mL.