

## Human Leptin receptor/LEP-R/CD295 protein (Recombinant) (C-hFc & His) (STJP002741)

### GENERAL INFORMATION

Product Type	Proteins
Host / Source	HEK293 cells

### PRODUCT PROPERTIES

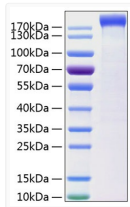
Formulation	Lyophilised from a 0.22 Mu m filtered solution of 50mM MES, 100mM NaCl, 1mM DTT, pH 6.5.
Storage Instruction	Store at -20°C for up to 1 year from the date of receipt, and avoid repeat freeze-thaw cycles.

### TARGET INFORMATION

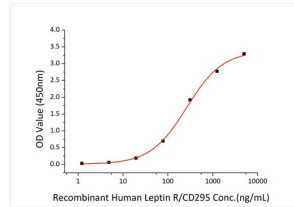
Gene ID	<a href="#">3953</a>
Gene Symbol	<a href="#">LEPR</a>
UniProt ID	<a href="#">LEPR_HUMAN</a>
Immunogen Region	Thr20-Asp839
Immunogen Sequence	TAFNLSYPITPWRFKLSKMP PNSTYDYFLLPAGLSKNTSN SNGHYETAPEPKFNSSGTHF SNLSKTTFHCCFRSEQDRNC SLCADNIEGKTFVSTVNSLV FQQIDANWNIQCWLKGDLLK FICYVESLFKLNFRNYKYV HLLYVLPVLEDSPLVPQKG SFQMVHCNCSVHECCECLVP VPTAKLNDTLLMCLKITSGG VIFQSPLMSVQPINMVKPDP PLGLHMEITDDGNLKISWS

### ADDITIONAL INFORMATION

Note STRICTLY FOR FURTHER SCIENTIFIC RESEARCH USE ONLY (RUO). MUST NOT TO BE USED IN DIAGNOSTIC OR THERAPEUTIC APPLICATIONS.



Recombinant Human Leptin receptor/LEP-R/CD295 Protein was determined by SDS-PAGE with Coomassie Blue, showing a band at 170-190 kDa.



Immobilized Recombinant Human Leptin protein at 2 Mu g/mL (100 Mu L/well) can bind Recombinant Human Leptin receptor/LEP-R/CD295 Protein, the EC<sub>50</sub> of Leptin R/CD295 is 261.45 ng/mL.