

Active Mouse CSF-1/M-CSF protein (Recombinant) (C-His) (STJP002734)

GENERAL INFORMATION

Product Type	Proteins
Host / Source	HEK293 cells

PRODUCT PROPERTIES

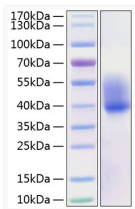
Formulation	Lyophilised from a 0.22 Mu m filtered solution of PBS, pH 7.4.
Storage Instruction	Store at -20°C for up to 1 year from the date of receipt, and avoid repeat freeze-thaw cycles.

TARGET INFORMATION

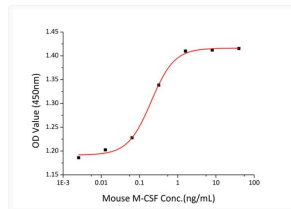
Gene ID	12977
Gene Symbol	Csf1
UniProt ID	CSF1_MOUSE
Immunogen Region	Met1-Glu262
Immunogen Sequence	MTARGAAGRCPSSTWLGSRLLVCLLMSRSIAKEVSEHCS HMIGNGHLKVLQQLIDSQME TSCQIAFEFVDQEQLDDPVC YLKKAFFLVQDIIDETMRFK DNTPNANATERLQELSNLNLN SCFTKDYEEQNKACVRFHE TPLQLLEKIKNFFNETKNLL EKDWNIPTKNCNNSFAKCSS RDVVTKPCDNCNLYPKATPSS DPASASPHQPPAPSMAPLAG LAWDDSQRTEGSSLLPSEL

ADDITIONAL INFORMATION

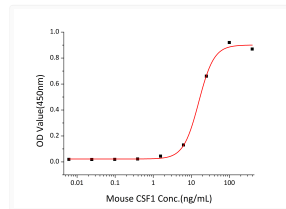
Note **STRICTLY FOR FURTHER SCIENTIFIC RESEARCH USE ONLY (RUO). MUST NOT TO BE USED IN DIAGNOSTIC OR THERAPEUTIC APPLICATIONS.**



Active Recombinant Mouse CSF-1/M-CSF Protein was determined by SDS-PAGE with Coomassie Blue



Recombinant Mouse CSF-1/M-CSF stimulates cell proliferation of the mouse bone marrow cells. The ED₅₀ for this effect is 7.5-30.1 ng/mL, corresponding to a specific activity of 3.32 × 10⁴ units/mg.



Recombinant Mouse CSF-1/M-CSF stimulates cell proliferation of the M-NFS-60 mouse myelogenous leukemia lymphoblast cells. The ED₅₀ for this effect is 2-8 ng/mL, corresponding to a specific activity of 12.5 × 10⁴ units/mg.