

Active Mouse CSF-2/GM-CSF protein (Recombinant) (N-His) (STJP002728)

GENERAL INFORMATION

Product Type	Proteins
Host / Source	HEK293 cells

PRODUCT PROPERTIES

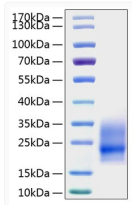
Formulation	Lyophilised from a 0.22 Mu m filtered solution of PBS, pH 7.4.
Storage Instruction	Store at -20°C for up to 1 year from the date of receipt, and avoid repeat freeze-thaw cycles.

TARGET INFORMATION

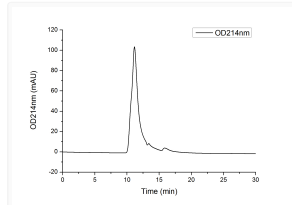
Gene ID	12981
Gene Symbol	Csf2
UniProt ID	CSF2_MOUSE
Immunogen Region	Ala18-Lys141
Immunogen Sequence	APTRSPITVTRPWKHVEAIK EALNLLDDMPVTLNEEVEVV SNEFSFKKLTVCVQTRLKIFE QGLRGNFTKLGALNMTASY YQTYCPPTPETDCETQVTTY ADFIDSLKFTLTDIPFECKK PGQK

ADDITIONAL INFORMATION

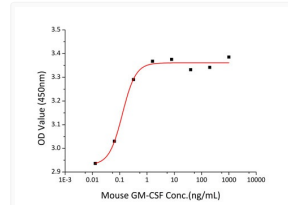
Note STRICTLY FOR FURTHER SCIENTIFIC RESEARCH USE ONLY (RUO). MUST NOT TO BE USED IN DIAGNOSTIC OR THERAPEUTIC APPLICATIONS.



Active Recombinant Mouse CSF-2/GM-CSF Protein was determined by SDS-PAGE with Coomassie Blue, showing a band at 20-35 kDa.



The purity of Mouse GM-CSF/CSF2 Protein (Cat. STJP002728) was greater than 90% as determined by SEC-HPLC.



Recombinant Mouse GM-CSF promotes the proliferation of FDC-P1 cells. The ED₅₀ for this effect is typically 0.04-0.17 ng/mL, corresponding to a specific activity of 5.88×10^6 units/mg.