

## Human Kininogen-1/KNG1 protein (Recombinant) (C-His) (STJP002685)

### GENERAL INFORMATION

Product Type	Proteins
Host / Source	HEK293 cells

### PRODUCT PROPERTIES

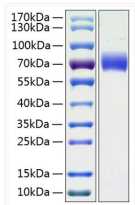
Formulation	Lyophilised from a 0.22 Mu m filtered solution of PBS, pH 7.4.
Storage Instruction	Store at -20°C for up to 1 year from the date of receipt, and avoid repeat freeze-thaw cycles.

### TARGET INFORMATION

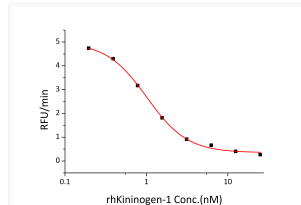
Gene ID	<a href="#">3827</a>
Gene Symbol	<a href="#">KNG1</a>
UniProt ID	<a href="#">KNG1_HUMAN</a>
Immunogen Region	Gln 19-Ser 427
Immunogen Sequence	QESQSEEIDCNDKDLFKAVD AALKKYNSQNQSNQFVLYR ITEATKTVGSDFYSFYKYEI KEGDCPVQSGKTWQDCEYKD AAKAATGECTATVGKRSSTK FSVATQTCQITPAEGPVVTA QYDCLGCVHPISTQSPDLEP ILRHGIQYFNNNTQHSSLFM LNEVKRAQRQVVAGLNFRMT YSIVQTNCSKENFLFLTPDC KSLWNGDTGECTDNAYIDIQ LRIASFQNCDIYPGKDFV

### ADDITIONAL INFORMATION

Note **STRICTLY FOR FURTHER SCIENTIFIC RESEARCH USE ONLY (RUO). MUST NOT TO BE USED IN DIAGNOSTIC OR THERAPEUTIC APPLICATIONS.**



Recombinant Human Kininogen-1/KNG1 Protein was determined by SDS-PAGE with Coomassie Blue, showing a band at 70 kDa.



Recombinant human KNG1 inhibits papain cleavage of a fluorogenic peptide substrate Z-FR-AMC (Catalog#ES009). The IC<sub>50</sub> value approximately is 1nM.