

Human Serpin A1/Alpha-1-antitrypsin protein (Recombinant) (C-His) (STJP002614)

GENERAL INFORMATION

Product Type	Proteins
Host / Source	HEK293 cells

PRODUCT PROPERTIES

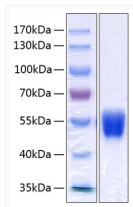
Formulation	Lyophilised from a 0.22 Mu m filtered solution of PBS, pH 7.4.
Storage Instruction	Store at -20°C for up to 1 year from the date of receipt, and avoid repeat freeze-thaw cycles.

TARGET INFORMATION

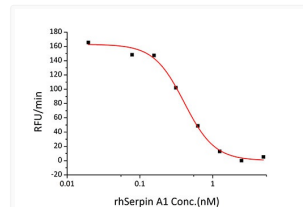
Gene ID	5265
Gene Symbol	SERPINA1
UniProt ID	A1AT_HUMAN
Immunogen Region	Glu25-Lys418
Immunogen Sequence	EDPQGDAAQKTDTSHHDDQH PTFNKITPNLAEFAFSLYRQ LAHQSNSTNIFFSPVSIATA FAMLSLGTKADTHDEILEGL NFNLTEIPEAQIHEGFQELL RTLNQPDSQLQLTTGNGLFL SEGLKLVKFLKEDVKKLYHS EAFTVNFVGDTEEAQKQINDY VEKGTQGGKIVDLVKELDRDT VFALVNYIFFKQWERPFV KDTEEEDFHVDQVTTVKVPM MKRLGMFNIQHCKKLSSWV

ADDITIONAL INFORMATION

Note STRICTLY FOR FURTHER SCIENTIFIC RESEARCH USE ONLY (RUO). MUST NOT TO BE USED IN DIAGNOSTIC OR THERAPEUTIC APPLICATIONS.



Recombinant Human Serpin A1/Alpha-1-antitrypsin Protein was determined by SDS-PAGE with Coomassie Blue, showing a band at 50-60 kDa.



Recombinant human SERPINA1 inhibits trypsin cleavage of a fluorogenic peptide substrate, Mca-RPKPVE-Nval-WRK (Dnp) -NH₂. The IC₅₀ value is approximately 0.4 nM.