

## Human Cystatin-M/CST6 protein (Recombinant) (C-His) (STJP002603)

### GENERAL INFORMATION

Product Type	Proteins
Host / Source	HEK293 cells

### PRODUCT PROPERTIES

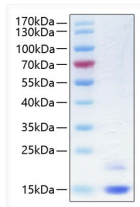
Formulation	Lyophilised from a 0.22 Mu m filtered solution of PBS, pH 7.4.
Storage Instruction	Store at -20°C for up to 1 year from the date of receipt, and avoid repeat freeze-thaw cycles.

### TARGET INFORMATION

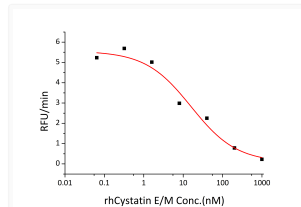
Gene ID	<a href="#">1474</a>
Gene Symbol	<a href="#">CST6</a>
UniProt ID	<a href="#">CYTM_HUMAN</a>
Immunogen Region	Arg29-Met149
Immunogen Sequence	RPQERMVGLRDLSPDDPQV QKAAQAAVASYNMGNSNSIYY FRDTHIIKAQSQLVAGIKYF LTMEMGSTDCRKTRVTGDHV DLTTCPAAGAQQEKLRCDF EVLVVPWQNSSQLLKHNCVQ M

### ADDITIONAL INFORMATION

Note STRICTLY FOR FURTHER SCIENTIFIC RESEARCH USE ONLY (RUO). MUST NOT TO BE USED IN DIAGNOSTIC OR THERAPEUTIC APPLICATIONS.



Recombinant Human Cystatin-M/CST6 Protein was determined by SDS-PAGE with Coomassie Blue, showing bands at 15.8 & 17 kDa.



Recombinant Human CST6 inhibits papain cleavage of a fluorogenic peptide substrate Z-FR-AMC (Catalog # ES009). The IC<sub>50</sub> value is approximately 16 nM.