

Human ALCAM/CD166 protein (Recombinant) (C-hFc & His) (STJP002570)

GENERAL INFORMATION

Product Type	Proteins
Host / Source	HEK293 cells

PRODUCT PROPERTIES

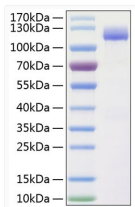
Formulation	Lyophilised from a 0.22 Mu m filtered solution of PBS, pH 7.4.
Storage Instruction	Store at -20°C for up to 1 year from the date of receipt, and avoid repeat freeze-thaw cycles.

TARGET INFORMATION

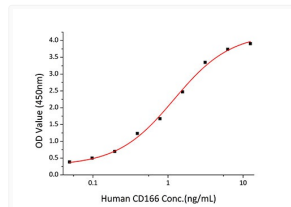
Gene ID	214
Gene Symbol	ALCAM
UniProt ID	CD166_HUMAN
Immunogen Region	Met1-Ala526
Immunogen Sequence	MESKGASSCRLLFCLLISAT VFRPGLGWYTVNSAYGDTII IPCRLDVPQNLNMFQKWKYEK PDGSPVFIAFRSSTKKSQY DDVPEYKDRNLNSENITLSI SNARISDEKRFVCMMLVTEEN VFEAPTIVKVKQPSKPEIV SKALFLETEQLKGLGDCISE DSYPDGNITWYRNGKVLHPL EGAVVIFKKEMDPVTQLYT MTSTLEYKTTKADIQMPFTC SVTYYGPSGQKTIHSEQAV

ADDITIONAL INFORMATION

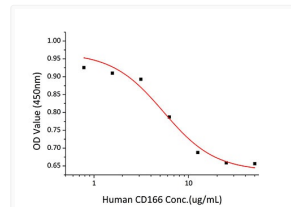
Note STRICTLY FOR FURTHER SCIENTIFIC RESEARCH USE ONLY (RUO). MUST NOT TO BE USED IN DIAGNOSTIC OR THERAPEUTIC APPLICATIONS.



Active Recombinant Human ALCAM/CD166 Protein was determined by SDS-PAGE with Coomassie Blue, showing a band at 120 kDa.



Immobilized recombinant Human CD6 at 1 Mu g/mL (100 Mu L/well) can bind Human CD166 with a linear range of 0.05-1.2ng/mL.



Recombinant Human CD166 block adhesion of Jurkat cells to immobilized Recombinant Human CD6 Protein. The ED₅₀ for this effect is 2.7-10.8 Mu g/mL.