

## Human Ephrin-B2/EFNB2 protein (Recombinant) (C-His) (STJP002561)

### GENERAL INFORMATION

Product Type	Proteins
Host / Source	HEK293 cells

### PRODUCT PROPERTIES

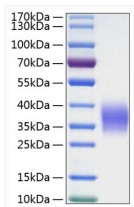
Formulation	Lyophilised from a 0.22 Mu m filtered solution of PBS, pH 7.4.
Storage Instruction	Store at -20°C for up to 1 year from the date of receipt, and avoid repeat freeze-thaw cycles.

### TARGET INFORMATION

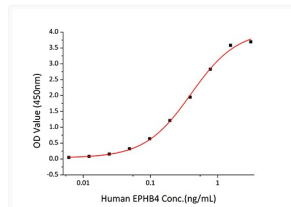
Gene ID	<a href="#">1948</a>
Gene Symbol	<a href="#">EFNB2</a>
UniProt ID	<a href="#">EFNB2_HUMAN</a>
Immunogen Region	Ile28-Ala229
Immunogen Sequence	IVLEPIYWNSSNSKFLPGQG LVLYPQIGDKLDIICPKVDS KTVGQYEYKVMVDKQAD RCTIKKENTPLLNCAPDQD IKFTIKFQEFSPNLWGLEFQ KNKDYYIISTSNGLGLDN QEGGVCQTRAMKILMKVGQD ASSAGSTRNKDPTRRPELEA GTNGRSSTTSPFVKPNPGSS TDGNSAGHSGNNILGSEVAL FA

### ADDITIONAL INFORMATION

Note STRICTLY FOR FURTHER SCIENTIFIC RESEARCH USE ONLY (RUO). MUST NOT TO BE USED IN DIAGNOSTIC OR THERAPEUTIC APPLICATIONS.



Active Recombinant Human Ephrin-B2/EFNB2 Protein was determined by SDS-PAGE with Coomassie Blue, showing a band at 30-40 kDa.



Immobilized Human EFNB2 at 0.5 Mu g/mL (100 Mu L/well) can bind Human EPHB4 with a linear range of 6-400pg/mL.