

Human EphA2/ECK protein (Recombinant) (C-His) (STJP002555)

GENERAL INFORMATION

Product Type	Proteins
Host / Source	HEK293 cells

PRODUCT PROPERTIES

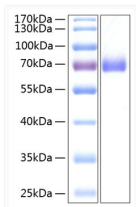
Formulation	Lyophilised from a 0.22 Mu m filtered solution of PBS, pH 7.4.
Storage Instruction	Store at -20°C for up to 1 year from the date of receipt, and avoid repeat freeze-thaw cycles.

TARGET INFORMATION

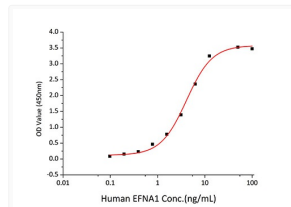
Gene ID	1969
Gene Symbol	EPHA2
UniProt ID	EPHA2_HUMAN
Immunogen Region	Gln25-Asn534
Immunogen Sequence	QGKEVLLDFAAAGGELGWL THPYGKGWDLMQNIMNDMPI YMYSVCNVMSGDQDNWLRN WVYRGEAERIFIELKFTVRD CNSFPGGASSCKETFNLYYA ESDLDTGTFQKRLFTKIDT IAPDEITVSSDFEARHVKN VEERSVGPLTRKGFYLAQD IGACVALLSVRVYKCPPEL LQGLAHPETIAGSDAPSLA TVAGTCVDHAVVPPGGEEPR MHC AVDGEWLVPVIGQCLCQ

ADDITIONAL INFORMATION

Note STRICTLY FOR FURTHER SCIENTIFIC RESEARCH USE ONLY (RUO). MUST NOT TO BE USED IN DIAGNOSTIC OR THERAPEUTIC APPLICATIONS.



Recombinant Human EphA2/ECK Protein was determined by SDS-PAGE with Coomassie Blue, showing a band at 70 kDa.



Immobilized Human EphA2 at 1 Mu g/mL (100 Mu L/well) can bind Human EFNA1 with a linear range of 0. 098-4. 084 ng/mL.