

Human IGF-II protein (Recombinant) (C-hFc) (STJP002010)

GENERAL INFORMATION

Product Type	Proteins
Host / Source	HEK293 cells

PRODUCT PROPERTIES

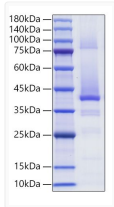
Formulation	Lyophilised from a 0.2 Mu m filtered solution of 50mMTris, 100mM Glycine, pH 7.5.
Storage Instruction	Store at -20°C for up to 1 year from the date of receipt, and avoid repeat freeze-thaw cycles.

TARGET INFORMATION

Gene ID	3481
Gene Symbol	IGF2
UniProt ID	IGF2_HUMAN
Immunogen Region	Ala25-Glu91
Immunogen Sequence	AYRPSETLCGGELVDTLQFV CGDRGFYFSRPASRVSRRSR GIVEECCFRSCDLALLETYC ATPAKSE

ADDITIONAL INFORMATION

Note	STRICTLY FOR FURTHER SCIENTIFIC RESEARCH USE ONLY (RUO). MUST NOT TO BE USED IN DIAGNOSTIC OR THERAPEUTIC APPLICATIONS.
------	-------------------------------------------------------------------------------------------------------------------------



Recombinant Human IGF-II Protein was determined by SDS-PAGE with Coomassie Blue, showing a band at 35-45 kDa.