

## Human VEGF R2/KDR protein (Recombinant) (C-His-Avi) {Biotin} (STJP001739)

### GENERAL INFORMATION

Product Type	Proteins
Host / Source	HEK293

### PRODUCT PROPERTIES

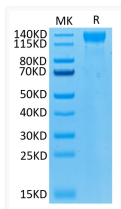
Formulation	Lyophilised from 0.2 $\mu$ m filtered PBS solution pH7.4.
Molecular Weight	Recombinant Human VEGF R2/KDR is a protein consisting of amino acid residues [Ala20-Glu764]. The protein has a predicted MW of 86.2 kDa. Due to glycosylation, the protein migrates to 115-140 kDa based on Tris-Bis PAGE result..
Storage Instruction	The lyophilized protein is stable for at least 1 year from date of receipt at -20°C.

### TARGET INFORMATION

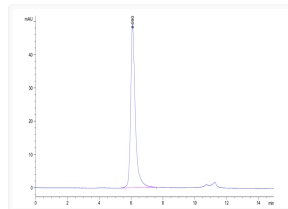
Gene ID	<a href="#">3791</a>
Gene Symbol	<a href="#">KDR</a>
UniProt ID	<a href="#">VGFR2_HUMAN</a>
Immunogen Region	Ala20-Glu764

### ADDITIONAL INFORMATION

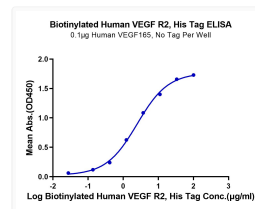
Note STRICTLY FOR FURTHER RESEARCH USE ONLY (RUO). MUST NOT TO BE USED IN DIAGNOSTIC OR THERAPEUTIC APPLICATIONS.



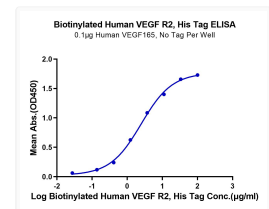
Biotinylated Human VEGF R2 on Tris-Bis PAGE under reduced condition. The purity is greater than 95%.



The purity of Biotinylated Human VEGF R2 is greater than 95% as determined by SEC-HPLC.



Immobilized Anti-VEGF R2 Antibody, hFc Tag at 0.5  $\mu$ g/ml (100  $\mu$ g/ml/well) on the plate. Dose response curve for Biotinylated Human VEGF R2, His Tag with the EC50 of 0.35  $\mu$ g/ml determined by ELISA.



Immobilized Anti-VEGF R2 Antibody, hFc Tag at 0.5  $\mu$ g/ml (100  $\mu$ g/ml/well) on the plate. Dose response curve for Biotinylated Human VEGF R2, His Tag with the EC50 of 0.35  $\mu$ g/ml determined by ELISA.