

Human KIR2DL3 protein (Recombinant) (C-His-Avi) {Biotin} (STJP001727)

GENERAL INFORMATION

Product Type	Proteins
Host / Source	HEK293

PRODUCT PROPERTIES

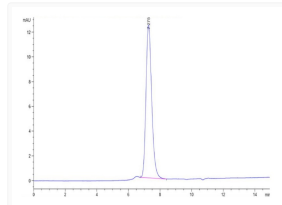
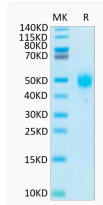
Formulation	Lyophilised from 0.2 μ m filtered PBS solution pH7.4.
Molecular Weight	Recombinant Human KIR2DL3 is a protein consisting of amino acid residues [His22-His245], The protein has a predicted MW of 27.3 kDa. Due to glycosylation, the protein migrates to 45-52 kDa based on Tris-Bis PAGE result..
Storage Instruction	The lyophilized protein is stable for at least 1 year from date of receipt at -20°C.

TARGET INFORMATION

Gene ID	3804
Gene Symbol	KIR2DL3
UniProt ID	K12L3_HUMAN
Immunogen Region	His22-His245

ADDITIONAL INFORMATION

Note **STRICTLY FOR FURTHER RESEARCH USE ONLY (RUO). MUST NOT TO BE USED IN DIAGNOSTIC OR THERAPEUTIC APPLICATIONS.**



Biotinylated Human KIR2DL3 on Tris-Bis PAGE under reduced conditions. The purity is greater than 95%.

The purity of Biotinylated Human KIR2DL3 is greater than 95% as determined by SEC-HPLC.