

## Human GUCY2C/Guanylyl cyclase C protein (Recombinant) (C-His-Avi) {Biotin} (STJP001720)

### GENERAL INFORMATION

Product Type	Proteins
Host / Source	HEK293

### PRODUCT PROPERTIES

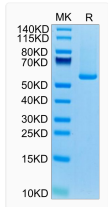
Formulation	Lyophilised from 0.2 $\mu$ m filtered PBS solution pH7.4.
Molecular Weight	Recombinant Human GUCY2C/Guanylyl cyclase C is a protein consisting of amino acid residues [Ser24-Gln430]. The protein has a predicted MW of 48.8 kDa. Due to glycosylation, the protein migrates to 55-65 kDa based on Tris-Bis PAGE result..
Storage Instruction	The lyophilized protein is stable for at least 1 year from date of receipt at -20°C.

### TARGET INFORMATION

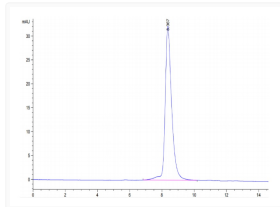
Gene ID	<a href="#">2984</a>
Gene Symbol	<a href="#">GUCY2C</a>
UniProt ID	<a href="#">GUC2C_HUMAN</a>
Immunogen Region	Ser24-Gln430

### ADDITIONAL INFORMATION

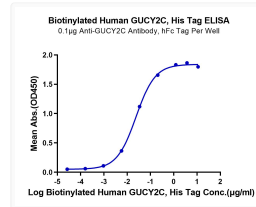
Note STRICTLY FOR FURTHER RESEARCH USE ONLY (RUO). MUST NOT TO BE USED IN DIAGNOSTIC OR THERAPEUTIC APPLICATIONS.



Biotinylated Human GUCY2C on Tris-Bis PAGE under reduced condition. The purity is greater than 95%.



The purity of Biotinylated Human GUCY2C is greater than 95% as determined by SEC-HPLC.



Immobilized Anti-GUCY2C Antibody at 1  $\mu$ g/ml (100  $\mu$ g/ml) on the plate. Dose response curve for Biotinylated Human GUCY2C, His Tag with the EC50 of 24.1  $\mu$ g/ml determined by ELISA.