

## Human CD3E&CD3D/CD3 epsilon&CD3 delta protein (Recombinant) (C-His) {Biotin} (STJP001700)

### GENERAL INFORMATION

Product Type	Proteins
Host / Source	HEK293

### PRODUCT PROPERTIES

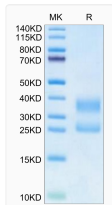
Formulation	Lyophilised from 0.2 $\mu$ m filtered PBS solution pH7.4.
Molecular Weight	Recombinant Human CD3E&CD3D/CD3 epsilon&CD3 delta (Primary Amine Labeling) is a protein consisting of amino acid residues [Asp23-Glu120 (CD3E) & Phe22-Ala105 (CD3D)], The protein has a predicted MW of 17.9 kDa (CD3E) and 16.7 kDa (CD3D). Due to glycosylation.
Storage Instruction	The lyophilized protein is stable for at least 1 year from date of receipt at -20°C.

### TARGET INFORMATION

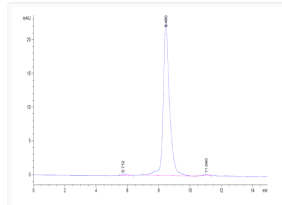
Gene ID	<a href="#">916</a>
Gene Symbol	<a href="#">CD3E</a>
UniProt ID	<a href="#">CD3E_HUMAN</a>
Immunogen Region	Asp23-Glu120 (CD3E) & Phe22-Ala105 (CD3D)

### ADDITIONAL INFORMATION

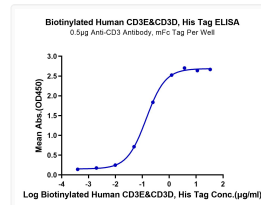
Note: STRICTLY FOR FURTHER RESEARCH USE ONLY (RUO). MUST NOT TO BE USED IN DIAGNOSTIC OR THERAPEUTIC APPLICATIONS.



Biotinylated Human CD3E&CD3D on Tris-Bis PAGE under reduced condition. The purity is greater than 95%.



The purity of Biotinylated Human CD3E&CD3D is greater than 95% as determined by SEC-HPLC.



Immobilized Anti-CD3 Antibody, mFc Tag at 5  $\mu$ g/ml (100  $\mu$ g/ml well) on the plate. Dose response curve for Biotinylated Human CD3E&CD3D, His Tag with the EC50 of 0.14  $\mu$ g/ml determined by ELISA.