

Human Latent TGF beta 1/TGFB1 protein (Recombinant) (N-His-Avi) {Biotin} (STJP001626)

GENERAL INFORMATION

Product Type	Proteins
Host / Source	HEK293

PRODUCT PROPERTIES

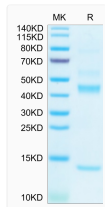
Formulation	Lyophilised from 0.2 μ m filtered PBS solution pH7.4.
Molecular Weight	Recombinant Human Latent TGF beta 1/TGFB1 is a protein consisting of amino acid residues [Leu30-Ser390 (C33S)], The protein has a predicted MW of 44.2 kDa. Due to glycosylation, the protein migrates to 40-50 (LAP) /13-15 (Mature TGF beta 1) kDa base
Storage Instruction	The lyophilized protein is stable for at least 1 year from date of receipt at -20°C.

TARGET INFORMATION

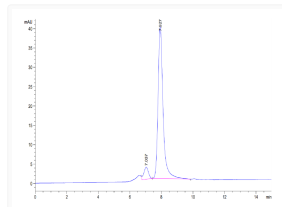
Gene ID	7040
Gene Symbol	TGFB1
UniProt ID	TGFB1_HUMAN
Immunogen Region	Leu30-Ser390 (C33S)

ADDITIONAL INFORMATION

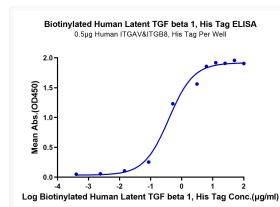
Note STRICTLY FOR FURTHER RESEARCH USE ONLY (RUO). MUST NOT TO BE USED IN DIAGNOSTIC OR THERAPEUTIC APPLICATIONS.



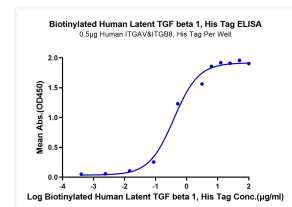
Biotinylated Human Latent TGF beta 1 on Tris-Bis PAGE under reduced condition. The purity is greater than 95%.



The purity of Biotinylated Human Latent TGF beta 1 is greater than 93% as determined by SEC-HPLC.



Immobilized Human ITGAV&ITGB6, His Tag at 1 μ g/ml (100 μ g I/Well) on the plate. Dose response curve for Biotinylated Human Latent TGF beta 1, His Tag with the EC50 of 0.10 μ g/ml determined by ELISA.



Immobilized Human ITGAV&ITGB6, His Tag at 1 μ g/ml (100 μ g I/Well) on the plate. Dose response curve for Biotinylated Human Latent TGF beta 1, His Tag with the EC50 of 0.10 μ g/ml determined by ELISA.