

Human Siglec-10 protein (Recombinant) (C-hFc-Avi) {Biotin} (STJP001597)

GENERAL INFORMATION

Product Type	Proteins
Host / Source	HEK293

PRODUCT PROPERTIES

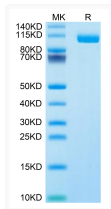
Formulation	Lyophilised from 0.2 μ m filtered PBS solution pH7.4.
Molecular Weight	Recombinant Human Siglec-10 is a protein consisting of amino acid residues [Met17-Thr546]. The protein has a predicted MW of 85.8 kDa. Due to glycosylation, the protein migrates to 95-110 kDa based on Tris-Bis PAGE result..
Storage Instruction	The lyophilized protein is stable for at least 1 year from date of receipt at -20°C.

TARGET INFORMATION

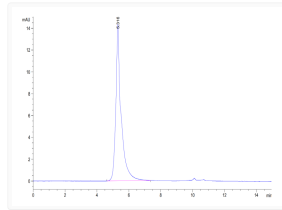
Gene ID	89790
Gene Symbol	SIGLEC10
UniProt ID	SIG10_HUMAN
Immunogen Region	Met17-Thr546

ADDITIONAL INFORMATION

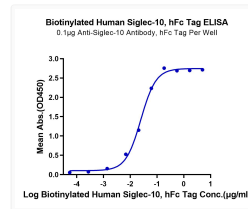
Note **STRICTLY FOR FURTHER RESEARCH USE ONLY (RUO). MUST NOT TO BE USED IN DIAGNOSTIC OR THERAPEUTIC APPLICATIONS.**



Biotinylated Human Siglec-10 on Tris-Bis PAGE under reduced condition. The purity is greater than 95%.



The purity of Biotinylated Human Siglec-10 is greater than 95% as determined by SEC-HPLC.



Immobilized Anti-Siglec-10 Antibody, hFc Tag at 1 μ g/ml (100 μ g/ml well) on the plate. Dose response curve for Biotinylated Human Siglec-10, hFc Tag with the EC50 of 25ng/ml determined by ELISA.