

## Human CLEC12A/MICL/CLL-1 protein (Recombinant) (N-hFc-Avi) {Biotin} (STJP001584)

### GENERAL INFORMATION

Product Type	Proteins
Host / Source	HEK293

### PRODUCT PROPERTIES

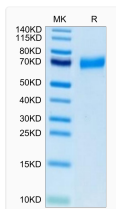
Formulation	Lyophilised from 0.2 $\mu$ m filtered PBS solution pH7.4.
Molecular Weight	Recombinant Human CLEC12A/MICL/CLL-1 is a protein consisting of amino acid residues [His65-Ala265], The protein has a predicted MW of 51.7 kDa. Due to glycosylation, the protein migrates to 67-70 kDa based on Tris-Bis PAGE result..
Storage Instruction	The lyophilized protein is stable for at least 1 year from date of receipt at -20°C.

### TARGET INFORMATION

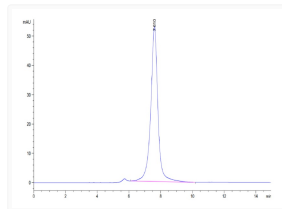
Gene ID	<a href="#">160364</a>
Gene Symbol	<a href="#">CLEC12A</a>
UniProt ID	<a href="#">CL12A_HUMAN</a>
Immunogen Region	His65-Ala265

### ADDITIONAL INFORMATION

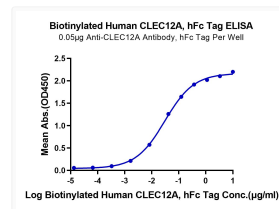
Note STRICTLY FOR FURTHER RESEARCH USE ONLY (RUO). MUST NOT TO BE USED IN DIAGNOSTIC OR THERAPEUTIC APPLICATIONS.



Biotinylated Human CLEC12A on Tris-Bis PAGE under reduced condition. The purity is greater than 95%.



The purity of Biotinylated Human CLEC12A is greater than 95% as determined by SEC-HPLC.



Immobilized Anti-CLEC12A Antibody, hFc Tag at 0.5  $\mu$ g/ml (100  $\mu$ g I/Well) on the plate. Dose response curve for Biotinylated Human CLEC12A, hFc Tag with the EC50 of 30.7 ng/ml determined by ELISA.