

Human KIR2DL1 protein (Recombinant) (C-His-Avi) {Biotin} (STJP001579)

GENERAL INFORMATION

Product Type	Proteins
Host / Source	HEK293

PRODUCT PROPERTIES

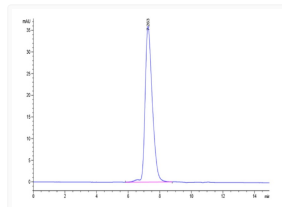
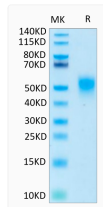
Formulation	Lyophilised from 0.2 μ m filtered PBS solution pH7.4.
Molecular Weight	Recombinant Human KIR2DL1 is a protein consisting of amino acid residues [His22-Arg242]. The protein has a predicted MW of 27.1 kDa. Due to glycosylation, the protein migrates to 48-60 kDa based on Tris-Bis PAGE result..
Storage Instruction	The lyophilized protein is stable for at least 1 year from date of receipt at -20°C.

TARGET INFORMATION

Gene ID	3802
Gene Symbol	KIR2DL1
UniProt ID	K12L1_HUMAN
Immunogen Region	His22-Arg242

ADDITIONAL INFORMATION

Note STRICTLY FOR FURTHER RESEARCH USE ONLY (RUO). MUST NOT TO BE USED IN DIAGNOSTIC OR THERAPEUTIC APPLICATIONS.



Biotinylated Human KIR2DL1 on Tris-Bis PAGE under reduced conditions. The purity is greater than 95%. The purity of Biotinylated Human KIR2DL1 is greater than 95% as determined by SEC-HPLC.