

## Human ACE2/ACEH protein (Recombinant) (C-His-Avi) {Biotin} (STJP001577)

### GENERAL INFORMATION

Product Type	Proteins
Host / Source	HEK293

### PRODUCT PROPERTIES

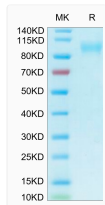
Formulation	Lyophilised from 0.2 $\mu$ m filtered PBS solution pH7.4.
Molecular Weight	Recombinant Human ACE2/ACEH is a protein consisting of amino acid residues [Gln18-Ser740]. The protein has a predicted MW of 86.5 kDa. Due to glycosylation, the protein migrates to 95-110 kDa based on Tris-Bis PAGE result..
Storage Instruction	The lyophilized protein is stable for at least 1 year from date of receipt at -20°C.

### TARGET INFORMATION

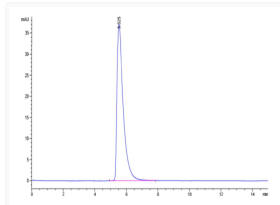
Gene ID	<a href="#">59272</a>
Gene Symbol	<a href="#">ACE2</a>
UniProt ID	<a href="#">ACE2_HUMAN</a>
Immunogen Region	Gln18-Ser740

### ADDITIONAL INFORMATION

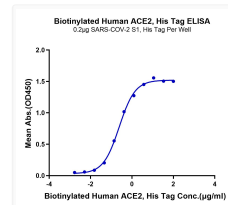
Note STRICTLY FOR FURTHER RESEARCH USE ONLY (RUO). MUST NOT TO BE USED IN DIAGNOSTIC OR THERAPEUTIC APPLICATIONS.



Biotinylated Human ACE2 on Tris-Bis PAGE under reduced condition. The purity is greater than 95%.



The purity of Biotinylated human ACE2 is greater than 95% as determined by SEC-HPLC.



Immobilized SARS-COV-2 S1, His Tag at 2  $\mu$ g/ml (100  $\mu$ g/ml). Dose response curve for Biotinylated Human ACE2, His Tag with EC50 of 0.24  $\mu$ g/ml determined by ELISA.