

Human GFRAL/GFR alpha-like protein (Recombinant) (C-His-Avi) {Biotin} (STJP001540)

GENERAL INFORMATION

Product Type	Proteins
Host / Source	HEK293

PRODUCT PROPERTIES

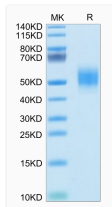
Formulation	Lyophilised from 0.2 μ m filtered PBS solution pH7.4.
Molecular Weight	Recombinant Human GFRAL/GFR alpha-like is a protein consisting of amino acid residues [Ser19-Glu351]. The protein has a predicted MW of 40.7 kDa. Due to glycosylation, the protein migrates to 48-62 kDa based on Tris-Bis PAGE result..
Storage Instruction	The lyophilized protein is stable for at least 1 year from date of receipt at -20°C.

TARGET INFORMATION

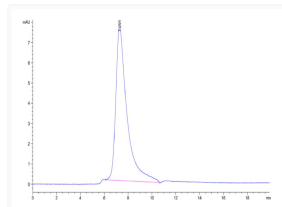
Gene ID	389400
Gene Symbol	GFRAL
UniProt ID	GFRAL_HUMAN
Immunogen Region	Ser19-Glu351

ADDITIONAL INFORMATION

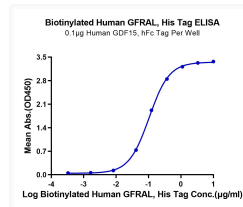
Note STRICTLY FOR FURTHER RESEARCH USE ONLY (RUO). MUST NOT TO BE USED IN DIAGNOSTIC OR THERAPEUTIC APPLICATIONS.



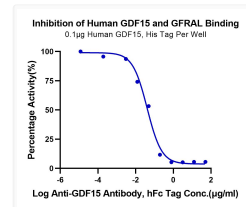
Biotinylated Human GFRAL on Tris-Bis PAGE under reduced conditions. The purity is greater than 95%.



The purity of Biotinylated Human GFRAL is greater than 95% as determined by SEC-HPLC.



Immobilized Human GDF15, His Tag at 1 Mu g/ml (100 Mu I/well) on the plate. Dose response curve for Biotinylated Human GFRAL, His Tag with the EC50 of 0. 1 Mu g/ml determined by ELISA.



Serial dilutions of Anti-GDF15 Antibody were added into Human GDF15, His Tag : Biotinylated Human GFRAL, His Tag binding reactions. The half maximal inhibitory concentration (IC50) is 40. 8ng/ml.