

## Mouse Stem Cell Factor protein (Recombinant) (STJP000479)

### GENERAL INFORMATION

Product Type	Proteins
Host / Source	Insect cells

### PRODUCT PROPERTIES

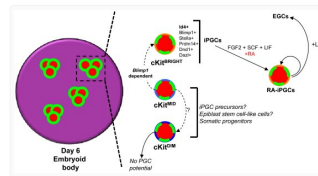
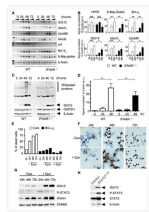
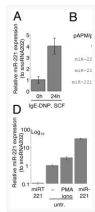
Formulation	Lyophilised from 0.2 M unfiltered solution in mM Tris, % trehalose, pH7.5.
Molecular Weight	Native Mouse Stem Cell Factor is generated by the proteolytic removal of the signal peptide and propeptide, the molecule has a calculated molecular mass of approximately 18 kDa. Recombinant SCF is a monomer protein consisting of 165 amino acid residue
Storage Instruction	Can be stored in working aliquots at 4°C for one month, or at -20°C for six months, with a carrier protein without detectable loss of activity. Avoid repeated freeze/thaw cycles. NA

### TARGET INFORMATION

Gene ID	<a href="#">17311</a>
Gene Symbol	<a href="#">Kitlg</a>
UniProt ID	<a href="#">SCF_MOUSE</a>
Immunogen Region	Mature chain
Immunogen Sequence	MKKTQTWIT CIYLQLLLFN PLVKTKEICG NPVTDNVKDI TKLVANLPND YMITLNYVAG MDVLP SHCWLRDMVIQLSLS LTLLDKFSN ISEGLSNYSI IDKLGKIVDD LVL CMEENAP KNIKESPKRP ETRSFTPEEF FSIFNRSIDA FKDFMVASDT SDCVLSSTLG PEKDSRVSVT KPFMLPPVA A SSLRNDSSSS NRKAAKAPED SGLQWTAMAL PALISLV

### ADDITIONAL INFORMATION

Note STRICTLY FOR FURTHER RESEARCH USE ONLY (RUO). MUST NOT TO BE USED IN DIAGNOSTIC OR THERAPEUTIC APPLICATIONS.



Peripheral blood mobilized, purified human CD34+ cells were obtained from the Hematopoietic Cell Processing Core at the Fred Hutchinson Cancer Center as previously described

For BMMC induction,  $1 \times 10^6$  BM cells were cultured supplemented with 5 ng/ml recombinant murine SCF and IL-3 for more than three weeks (>98% expressed c-kit and Fc Epsilon RI Alpha).

A) Differentiated BMMCs were either left resting or were stimulated with 1.5  $\mu$ g/mL IgE anti-DNP, 0.2  $\mu$ g/mL DNP-HSA and 20ng/mL SCF prior analysis of miR-221 expression by TaqMan qRT-PCR.