

## Anti-LYVE-1 antibody (25-235 aa) [4G1] (STJA0041991)

### GENERAL INFORMATION

Product Type	Primary antibodies
Applications	ELISA/WB/ICC/IF
Host / Source	Mouse
Reactivity	Human

### PRODUCT PROPERTIES

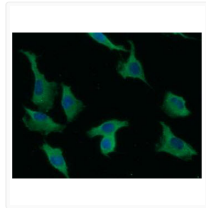
Clonality	Monoclonal
Concentration	1 mg/mL
Conjugation	Unconjugated
Purification	By protein-G affinity chromatography
Formulation	Liquid in phosphate-Buffered Saline (pH 7.4) with 0.02% Sodium Azide, 10% Glycerol
Isotype	IgG2bk
Storage Instruction	For short term storage, keep at +2C to +8C for up to 1 week. For long term storage, aliquot and store at -20C, and avoid repeat freeze-thaw cycles.

### TARGET INFORMATION

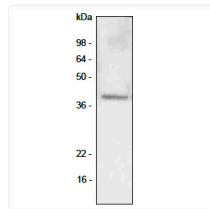
Gene ID	<a href="#">10894</a>
Gene Symbol	<a href="#">LYVE1</a>
UniProt ID	<a href="#">LYVE1_HUMAN</a>
Immunogen Region	25-235 aa

### ADDITIONAL INFORMATION

Note STRICTLY FOR FURTHER SCIENTIFIC RESEARCH USE ONLY (RUO). MUST NOT TO BE USED IN DIAGNOSTIC OR THERAPEUTIC APPLICATIONS.



ICC IF of LYVE-1 in A549 cells stained with STJA0041991 antibody and Alexa Fluor 488



Western blot showing LYVE-1 protein detection in A549 lung carcinoma cell lysate using human LYVE-1 antibody