

Anti-TREM2 antibody (19-161aa) [2B5] (STJA0041983)

GENERAL INFORMATION

Product Type	Primary antibodies
Applications	ELISA/WB/ICC/IF/FACS
Host / Source	Mouse
Reactivity	Human

PRODUCT PROPERTIES

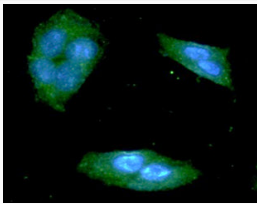
Clonality	Monoclonal
Concentration	1 mg/mL
Conjugation	Unconjugated
Purification	By protein-G affinity chromatography
Formulation	Liquid in phosphate-Buffered Saline (pH 7.4) with 0.02% Sodium Azide, 10% Glycerol
Isotype	IgG3k
Storage Instruction	For short term storage, keep at +2C to +8C for up to 1 week. For long term storage, aliquot and store at -20C, and avoid repeat freeze-thaw cycles.

TARGET INFORMATION

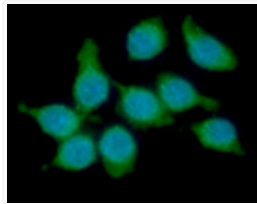
Gene ID	54209
Gene Symbol	TREM2
UniProt ID	TREM2_HUMAN
Immunogen Region	19-161aa

ADDITIONAL INFORMATION

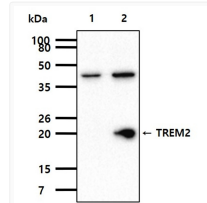
Note STRICTLY FOR FURTHER SCIENTIFIC RESEARCH USE ONLY (RUO). MUST NOT TO BE USED IN DIAGNOSTIC OR THERAPEUTIC APPLICATIONS.



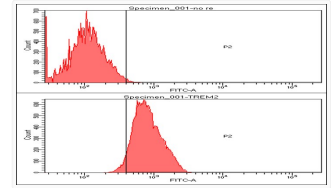
ICC IF of TREM2 in HepG2 cells stained with STJA0041983 antibody Alexa Fluor 488 secondary and DAPI nuclear stain



ICC IF of TREM2 in Raw264.7 cells with STJA0041983 antibody and Alexa Fluor 488 detection



Western blot of human TREM2 antibody showing 293T cell lysate and TREM2 19-161aa transfected lysate



Flow cytometry of TREM2 in Hep3B cells using Human TREM2 antibody STJA0041983