

Anti-GAPDH antibody [AT4E8] (STJA0041965)

GENERAL INFORMATION

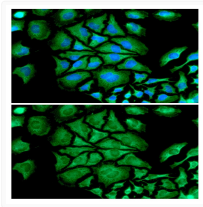
Product Type	Primary antibodies
Applications	ELISA/WB/ICC/IF
Host / Source	Mouse
Reactivity	Rabbit

PRODUCT PROPERTIES

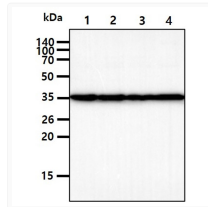
Clonality	Monoclonal
Concentration	0.2 mg/mL
Conjugation	Unconjugated
Purification	By protein-A affinity chromatography
Formulation	Liquid in phosphate-Buffered Saline (pH 7.4) with 0.02% Sodium Azide, 10% Glycerol
Isotype	IgG2bk
Storage Instruction	For short term storage, keep at +2C to +8C for up to 1 week. For long term storage, aliquot and store at -20C, and avoid repeat freeze-thaw cycles.

ADDITIONAL INFORMATION

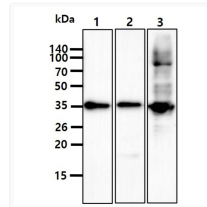
Note STRICTLY FOR FURTHER SCIENTIFIC RESEARCH USE ONLY (RUO). MUST NOT TO BE USED IN DIAGNOSTIC OR THERAPEUTIC APPLICATIONS.



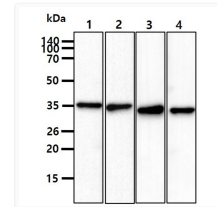
ICC IF of GAPDH in HeLa cells stained with STJA0041965 antibody Alexa Fluor 488 secondary green and DAPI nuclear stain blue



GAPDH antibody Western blot showing HepG2 MCF7 Jurkat and A549 cell lysates



GAPDH antibody western blot of mouse brain eye and muscle tissue lysates



Western blot of GAPDH antibody on 293T cell lysate showing dilution series