

## Anti-CD94/KLRD1 antibody (32-179aa) [AT13E3] (STJA0041860)

### GENERAL INFORMATION

|               |                    |
|---------------|--------------------|
| Product Type  | Primary antibodies |
| Applications  | ELISA/WB/FACS      |
| Host / Source | Mouse              |
| Reactivity    | Human              |

### PRODUCT PROPERTIES

|                     |   |
|---------------------|---|
| Clonality           | Monoclonal  |
| Concentration       | 1 mg/mL   |
| Conjugation         | Unconjugated  |
| Purification        | By protein-A affinity chromatography  |
| Formulation         | Liquid in phosphate-Buffered Saline (pH 7.4) with 0.02% Sodium Azide, 10% Glycerol  |
| Isotype             | IgG1k   |
| Storage Instruction | For short term storage, keep at +2C to +8C for up to 1 week. For long term storage, aliquot and store at -20C, and avoid repeat freeze-thaw cycles. |

### TARGET INFORMATION

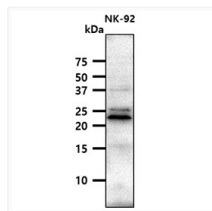
|                  |                             |
|------------------|-----------------------------|
| Gene ID          | <a href="#">3824</a>        |
| Gene Symbol      | <a href="#">KLRD1</a>       |
| UniProt ID       | <a href="#">KLRD1_HUMAN</a> |
| Immunogen Region | 32-179aa                    |

### ADDITIONAL INFORMATION

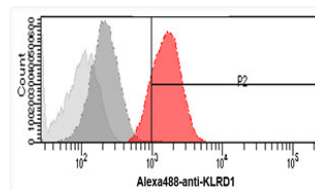
Note STRICTLY FOR FURTHER SCIENTIFIC RESEARCH USE ONLY (RUO). MUST NOT TO BE USED IN DIAGNOSTIC OR THERAPEUTIC APPLICATIONS.



Western blot of human CD94 KLRD1 antibody STJA0041860 in K562 MCF7 and A549 cell lysates



Western blot of human CD94 KLRD1 antibody in NK-92 cell lysates using anti-mouse HRP detection



Flow cytometry of KLRD1 in PBMC cells stained with STJA0041860 antibody