

Anti-FHL2 antibody (1-279aa) [AT21D11] (STJA0041859)

GENERAL INFORMATION

Product Type	Primary antibodies
Applications	ELISA/WB/ICC/IF
Host / Source	Mouse
Reactivity	Human

PRODUCT PROPERTIES

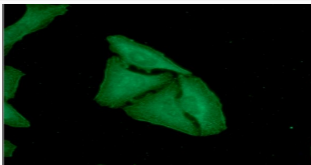
Clonality	Monoclonal
Concentration	1 mg/mL
Conjugation	Unconjugated
Purification	By protein-A affinity chromatography
Formulation	Liquid in phosphate-Buffered Saline (pH 7.4) with 0.02% Sodium Azide, 10% Glycerol
Isotype	IgG1k
Storage Instruction	For short term storage, keep at +2C to +8C for up to 1 week. For long term storage, aliquot and store at -20C, and avoid repeat freeze-thaw cycles.

TARGET INFORMATION

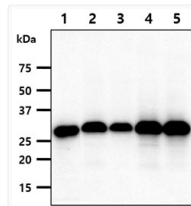
Gene ID	2274
Gene Symbol	FHL2
UniProt ID	FHL2_HUMAN
Immunogen Region	1-279aa

ADDITIONAL INFORMATION

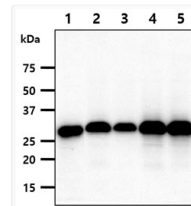
Note STRICTLY FOR FURTHER SCIENTIFIC RESEARCH USE ONLY (RUO). MUST NOT TO BE USED IN DIAGNOSTIC OR THERAPEUTIC APPLICATIONS.



ICC IF of FHL2 in HeLa cells with STJA0041859 antibody Alexa Fluor 488 secondary and DAPI nuclear stain



Western blot of human FHL2 protein in HeLa, A549, MCF7, SK-OV-3 and HT1080 cell lysates



Western blot of human FHL2 protein in HeLa, A549, MCF7, SK-OV-3 and HT1080 cell lysates