

Anti-NM23-H2/NME2 antibody (1-152aa) [AT2E3] (STJA0041848)

GENERAL INFORMATION

Product Type	Primary antibodies
Applications	ELISA/WB/ICC/IF
Host / Source	Mouse
Reactivity	Human

PRODUCT PROPERTIES

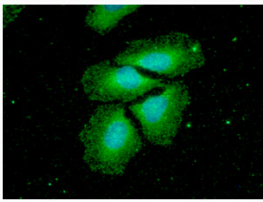
Clonality	Monoclonal
Concentration	1 mg/mL
Conjugation	Unconjugated
Purification	By protein-A affinity chromatography
Formulation	Liquid in phosphate-Buffered Saline (pH 7.4) with 0.02% Sodium Azide, 10% Glycerol
Isotype	IgG1k
Storage Instruction	For short term storage, keep at +2C to +8C for up to 1 week. For long term storage, aliquot and store at -20C, and avoid repeat freeze-thaw cycles.

TARGET INFORMATION

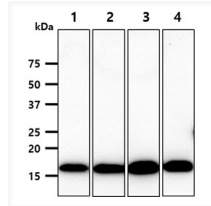
Gene ID	4831
Gene Symbol	NME2
UniProt ID	NDKB_HUMAN
Immunogen Region	1-152aa

ADDITIONAL INFORMATION

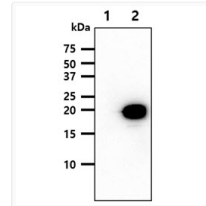
Note STRICTLY FOR FURTHER SCIENTIFIC RESEARCH USE ONLY (RUO). MUST NOT TO BE USED IN DIAGNOSTIC OR THERAPEUTIC APPLICATIONS.



ICC IF of NME2 in HeLa cells stained with STJA0041848 antibody Alexa Fluor 488 and DAPI



Western blot of Human NM23-H2 NME2 antibody in HeLa A549 MCF7 and LnCap cell lysates



Western blot of human NME2 NM23-H2 protein expression in 293T cells using STJA0041848 antibody