

## Anti-Chitinase 3-like 2/CHI3L2 antibody (27-390aa) [AT2B5] (STJA0041845)

### GENERAL INFORMATION

Product Type	Primary antibodies
Applications	ELISA/WB/FACS
Host / Source	Mouse
Reactivity	Human

### PRODUCT PROPERTIES

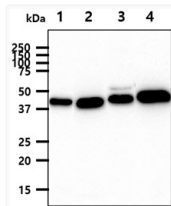
Clonality	Monoclonal
Concentration	1 mg/mL
Conjugation	Unconjugated
Purification	By protein-A affinity chromatography
Formulation	Liquid in phosphate-Buffered Saline (pH 7.4) with 0.02% Sodium Azide, 10% Glycerol
Isotype	IgG2bk
Storage Instruction	For short term storage, keep at +2C to +8C for up to 1 week. For long term storage, aliquot and store at -20C, and avoid repeat freeze-thaw cycles.

### TARGET INFORMATION

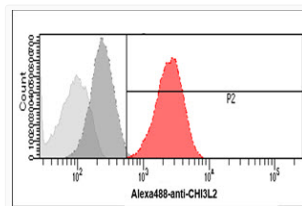
Gene ID	<a href="#">1117</a>
Gene Symbol	<a href="#">CHI3L2</a>
UniProt ID	<a href="#">CHI3L2_HUMAN</a>
Immunogen Region	27-390aa

### ADDITIONAL INFORMATION

Note STRICTLY FOR FURTHER SCIENTIFIC RESEARCH USE ONLY (RUO). MUST NOT TO BE USED IN DIAGNOSTIC OR THERAPEUTIC APPLICATIONS.



Western blot of human CHI3L2 antibody STJA0041845 showing detection in 293T HeLa, HepG2 and LnCap cell lysates



Flow cytometry of CHI3L2 in HeLa cells stained with STJA0041845 antibody