

Anti-Leptin/OB antibody (22-167aa) [AT7E10] (STJA0041833)

GENERAL INFORMATION

Product Type	Primary antibodies
Applications	ELISA/WB/ICC/IF
Host / Source	Mouse
Reactivity	Human

PRODUCT PROPERTIES

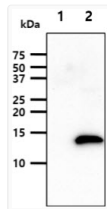
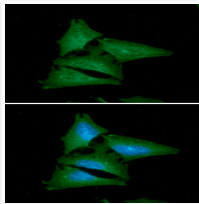
Clonality	Monoclonal
Concentration	1 mg/mL
Conjugation	Unconjugated
Purification	By protein-A affinity chromatography
Formulation	Liquid in phosphate-Buffered Saline (pH 7.4) with 0.02% Sodium Azide, 10% Glycerol
Isotype	IgG2bk
Storage Instruction	For short term storage, keep at +2C to +8C for up to 1 week. For long term storage, aliquot and store at -20C, and avoid repeat freeze-thaw cycles.

TARGET INFORMATION

Gene ID	3952
Gene Symbol	LEP
UniProt ID	LEP_HUMAN
Immunogen Region	22-167aa

ADDITIONAL INFORMATION

Note STRICTLY FOR FURTHER SCIENTIFIC RESEARCH USE ONLY (RUO). MUST NOT TO BE USED IN DIAGNOSTIC OR THERAPEUTIC APPLICATIONS.



ICC IF of Leptin in HeLa cells stained with Western blot of human Leptin OB antibody
STJA0041833 antibody Alexa Fluor 488 STJA0041833 showing 293T and Leptin-
secondary and DAPI nuclear stain transfected 293T cell lysates