

Anti-GMF-beta/GMFB antibody (1-142aa) [AT44D8] (STJA0041826)

GENERAL INFORMATION

Product Type	Primary antibodies
Applications	ELISA/WB/ICC/IF
Host / Source	Mouse
Reactivity	Human

PRODUCT PROPERTIES

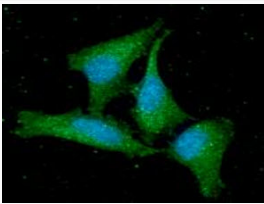
Clonality	Monoclonal
Concentration	1 mg/mL
Conjugation	Unconjugated
Purification	By protein-A affinity chromatography
Formulation	Liquid in phosphate-Buffered Saline (pH 7.4) with 0.02% Sodium Azide, 10% Glycerol
Isotype	IgG2ak
Storage Instruction	For short term storage, keep at +2C to +8C for up to 1 week. For long term storage, aliquot and store at -20C, and avoid repeat freeze-thaw cycles.

TARGET INFORMATION

Gene ID	2764
Gene Symbol	GMFB
UniProt ID	GMFB_HUMAN
Immunogen Region	1-142aa

ADDITIONAL INFORMATION

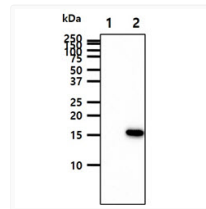
Note STRICTLY FOR FURTHER SCIENTIFIC RESEARCH USE ONLY (RUO). MUST NOT TO BE USED IN DIAGNOSTIC OR THERAPEUTIC APPLICATIONS.



ICC IF of GMFB in HeLa cells stained with DAPI and anti-GMFB antibody



Western blot of human GMFB GMF-beta protein in PC3 cell lysate using STJA0041826 antibody



Western blot of human GMFB antibody STJA0041826 in 293T cell lysates