

Anti-EphA2 antibody (27-537aa) [AT66G9] (STJA0041815)

GENERAL INFORMATION

Product Type	Primary antibodies
Applications	ELISA/WB/ICC/IF
Host / Source	Mouse
Reactivity	Human

PRODUCT PROPERTIES

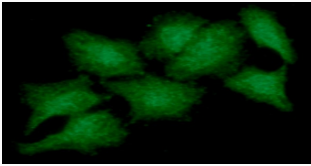
Clonality	Monoclonal
Concentration	1 mg/mL
Conjugation	Unconjugated
Purification	By protein-A affinity chromatography
Formulation	Liquid in phosphate-Buffered Saline (pH 7.4) with 0.02% Sodium Azide, 10% Glycerol
Isotype	IgG2bk
Storage Instruction	For short term storage, keep at +2C to +8C for up to 1 week. For long term storage, aliquot and store at -20C, and avoid repeat freeze-thaw cycles.

TARGET INFORMATION

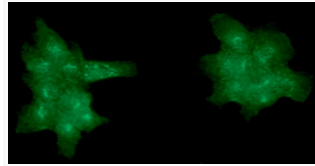
Gene ID	1969
Gene Symbol	EPHA2
UniProt ID	EPHA2_HUMAN
Immunogen Region	27-537aa

ADDITIONAL INFORMATION

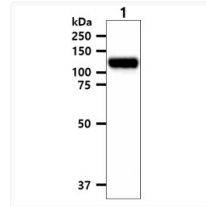
Note STRICTLY FOR FURTHER SCIENTIFIC RESEARCH USE ONLY (RUO). MUST NOT TO BE USED IN DIAGNOSTIC OR THERAPEUTIC APPLICATIONS.



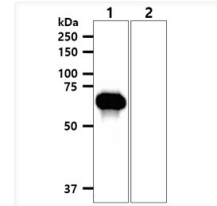
ICC IF staining of human EPHA2 in HeLa cells with anti-EPHA2 antibody and Alexa Fluor 488



ICC IF of EPHA2 in A431 cells with anti-human EPHA2 monoclonal antibody and Alexa Fluor 488



Western blot of human EphA2 protein in PC3 cell lysate using STJA0041815 antibody



Western blot of human EphA2 protein domains using anti-human EPHA2 antibody